

FARMNAVIGATOR

7" Ultra bright



G7 Plus

Your GUIDE to Precision Farming

Parallel Guidance + Automatic Section Control + Auto-steering + Road Navigation



Create your database of fields

Start creating your fields' database: measure your field boundary, calculate the area and save the position of obstacles or soil samples.



Follow the satellite assisted guidance

- Choose the guidelines for your activity (A-B parallel lines, identical curves, adaptive contour or pivot guidelines) and follow the guidance cursor to correct your driving.
- Save and recall guidelines for further activities in the field.
- Make sure the guidance line is always visible through the circle on the top of the smart cursor. The cursor will help you understand the tractor turn radius, to quickly correct your steer.



Configure your implements and control them

- Create a profile for each implement and activity (e.g. seeding, fertilizing, or spraying): set the working width, or the number of boom sections and their individual width.
- Choose a profile and get indications for manual boom switch control to start reducing costs and protecting the environment.
- Connect a automatic section controller to G7 Plus Farmnavigator for higher precision and productivity. You can still close or open manually a section from the display forcing the automatic control.



Save your Jobs

G7 Ezy Farmnavigator records data for each Job: farmer, activity, field, implements used, products used, worked area, total time etc. Fields and jobs can be exported to Google Earth as .kmz files.



Manage the Headland

When starting a job, you can create an headland within the field boundary, based on your working width. The headland function can be used with A-B parallel guidelines, identical curves and adaptive contour guidelines, and it allows working the headland at the end, avoiding unnecessary overlaps.



Let the Auto-steering System guide you

G7 Plus Farmnavigator can be used with the Farmnavigator Autosteering kit to achieve maximum precision and reduce the operator fatigue.



Use the Sat-Nav for Road Navigation

You can use G7 Plus Farmnavigator to navigate to you fields or to anywhere else, thanks to the Road navigation function and European maps included!

FARMNAVIGATOR

G7 Plus FARMNAVIGATOR Your GUIDE to Precision Farming

Easy to install

The installation takes only few minutes:

1. Place the Farmnavigator on the bracket
2. Plug the power cable
3. Connect the external antenna into the DB9 connector

Technical Specifications

- Display: 7" bonded LCD, 1024x600 px, 1000 nits
- Capacitive Multi -Touch Screen
- Built-in WAAS / EGNOS / MSAS GPS
- Wifi
- Bluetooth
- Supply Voltage: 10-35 Vdc
- Power consumption: 1,5 A MAX @ 12 V (~18 W)
- Powered bracket with 3 DB9 serial ports
- Power cable with 3 connectivity options: Cigarette lighter, spade terminals, Cobo connector
- Operating temperature: -10 °C/+60 °C
- Storage temperature: -30 °C/+80 °C
- Water and dustproof IP56, suitable for tractors without a cab
- Dimensions: 188 x 146 x 33 mm
- Weight: 640 g

Content of the box



G7 Plus
Farmnavigator



Powered bracket



Power cable
adapters



Dust Protective
cover



Heavy Duty suction
cup holder



Remote Control

Images are for illustrative purposes only and can differ from the real product.

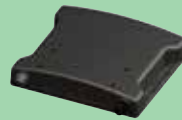
Accessories



Farmnavigator Smart GPS/GNSS receiver

- GPS, GLONASS concurrent operation
- SBAS tracking
- 72 channels
- 4m power cable Conxall to DB9 connector.

You can also choose any other GNSS receiver with NMEA0183 output. For correct setting please ask your dealer!



Farmnavigator C-Box

The optional C-Box provides additional simultaneous connections: USB, Ethernet and Video input that allow the G7 Plus Farmnavigator to be connected to the auto-steering and rear view field camera.

Farmnavigator Extension



Farmnavigator Autosteering System

Upgrade from manual guidance to automatic steering to achieve higher precision and reduce the operator fatigue.

Other Extensions



Automatic section control

Connect a controller to G7 Plus Farmnavigator to reduce costs and environmental impact. Ask your dealer for compatible controllers.



Video camera

Connect G7 Plus Farmnavigator to a video camera to capture rear view of your field or of sensitive points of the implement, directly on the 7" display while operating.

*C-Box required.