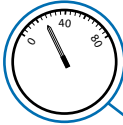


EngiBOX

The Engine Monitoring System for ROTAX engines



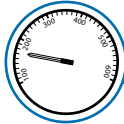
Oil Pressure



Oil Temperature / Air Temperature



Cylinder Head Temperature (CHT) / Coolant Temperature (CT)



Revolutions per Minute (RPM)



Exhaust Gas Temperature (EGT)



Manifold Pressure (MAP)



Hobbs meter



The EngiBOX System: engine management & control



1. Monitor your Engine real-time during the flight and store engine data with **EngiBOX**.

2. Get Instant Support Service from your Rotax Service Center, through the free **EngiBOX App**.

3. Thanks to the **EngiBOX Portal**, you can manage your Engine at home, view your flights and the recorded engine performance.

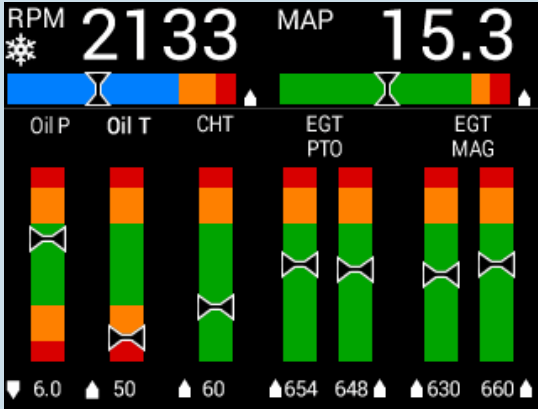
4. You can share your engine data with your **Rotax Service Center** anytime you need maintenance or help.



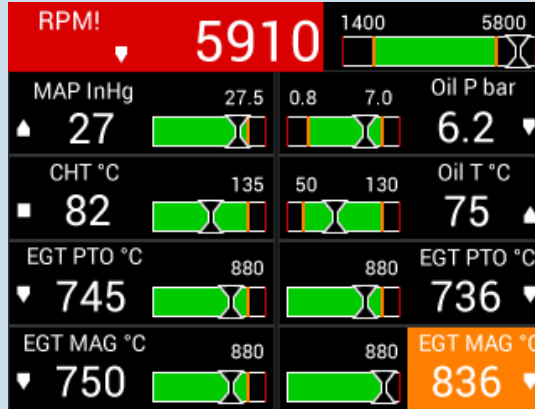
The EngiBOX web portal

- **Safely store your engine data:** always available on your EngiBOX Portal account.
- **Always in control:** check your engine performance from anywhere / any platform.
- **Get better diagnosis and support:** share your data with your Rotax Service Center for a full analysis.

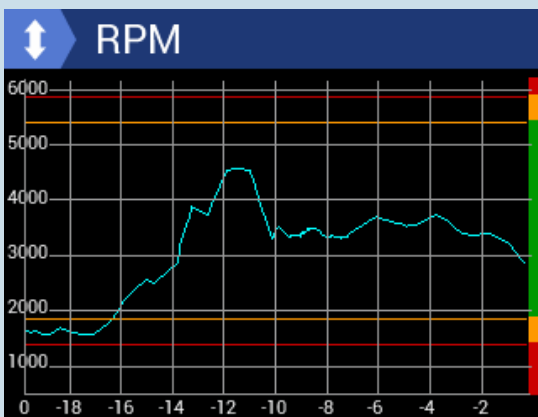
Register your account at: engibox.avmap.it



Data Graphic View: trends, warning and alarm limits.



Data Values View: trends, warning and alarm limits.



Graphs: available for performance analysis on each engine parameter



Clock Page: flight time, time since the last service overhaul, life time of the engine.

Software Features

- EngiBOX measures and displays engine parameters.
- Warn you instantly if any measurement exceeds the engine limits.
- Update rate of five times per second.
- Data are recorded and stored in the internal memory (up to 160h).
- Data export to Micro SD or EngiBOX Mobile App.
- Download the free EngiBOX Mobile App to get Instant Support Service.

Technical Specifications

- Dimensions: 95 x 95 x 88 mm
- Fitting standard 3-1/8" (79.5 mm) panel hole
- Weight: 250g
- Display: 3.5" colour LCD, with anti reflective coat 320x240 pixels, 500 cm/m²
- Micro SD slot
- Real Time Clock
- Bluetooth Low Energy
- Power Input range: 10-35 VDC
- Current consumption @ 12VDC: 150 mA MAX
- Operating Temperature range: -20° C / +70° C
- Manifold pressure sensor
- Sensor probe connection board:
 - 4 x Thermocouple sensor input for EGT
 - 2 x Resistance thermometer sensor input for Oil T, CHT, CT or Air T
 - 1 x Oil pressure sensor input for Oil P
 - 1 x RPM pick-up
 - 1 x Serial connection (RS-232, NMEA for GPS input)

Compatible Sensors

- Thermocouple sensor: type K and J
- Resistance thermometer sensor: standard Rotax NTC and PT-100
- Oil pressure sender: standard Rotax 4-20 mA pressure sender and resistive 10 Bar/150 psi VDO pressure sender.

Note: Sensor probes are not included in the box.

Compatible Engines

Rotax Engine series: 447, 503, 582, 618, 912, 912s, 914.

Note: All compatible engines are preconfigured in the software installation wizard.