

EKP^V

Importing Flight Plans from



The **AvMap EKP V, IV PRO, IV** and **Geopilot II Plus** devices are compatible with iFlightPlanner's web-based flight planning solution. Simply plan a flight using the intuitive, online Flight Wizard™ at <http://www.iFlightPlanner.com/PlanAFlight> and export your route to your AvMap GPS navigator using the “AvMap Suite” or “GPX Converter” depending on your device.

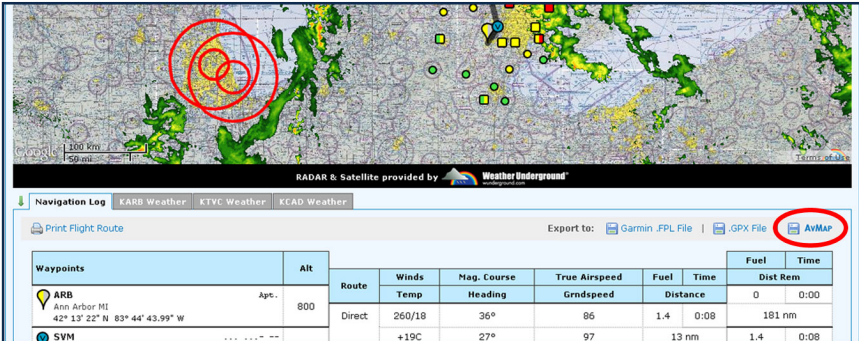
NOTE: This instructional guide assumes that you own and fly an **AvMap EKP V** and are a current iFlightPlanner Premium member. If you are not yet an iFlightPlanner Premium member, please visit <http://www.iFlightPlanner.com/AvMap> to create or upgrade your membership.

The following ten (10) steps will help you facilitate the transfer of your flight plans from iFlightPlanner to your AvMap EKP V.

• • •

1. Plan your route by using the web-based iFlightPlanner Flight Wizard™ found at <http://www.iFlightPlanner.com/PlanAFlight>.

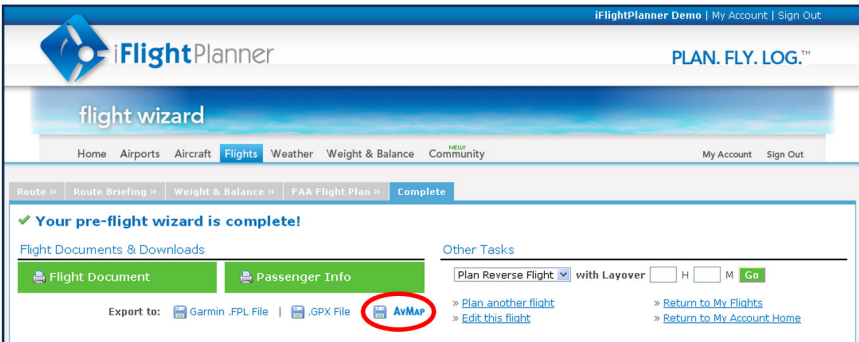
2a. Once satisfied with the routing of your flight, click the “Export to AvMap” link beneath iFlightPlanner's Google Maps™ interface while on the first step of the Flight Wizard™ (as shown); or



The screenshot shows the iFlightPlanner Flight Wizard interface. At the top, there is a map with a red circle highlighting the 'AvMap' export option. Below the map, there is a table with flight data. The table has columns for Waypoints, Alt, Route, Winds, Mag. Course, True Airspeed, Fuel, Time, and Dist Rem. The waypoints are ARB (Ann Arbor MI) and SYM. The route is Direct. The winds are 260/18 and +19C. The magnetic course is 36° and 27°. The true airspeed is 86 and 97. The fuel is 1.4 and 13 nm. The time is 0:08 and 0:08. The distance remaining is 181 nm.

Waypoints	Alt	Route	Winds	Mag. Course	True Airspeed	Fuel	Time	Fuel	Time
			Temp	Heading	Grdspeed	Distance		0	0:00
ARB Ann Arbor MI 42° 13' 22" N 83° 44' 43.99" W	Apt. 800	Direct	260/18	36°	86	1.4	0:08	181 nm	
SYM			+19C	27°	97	13 nm		1.4	0:08

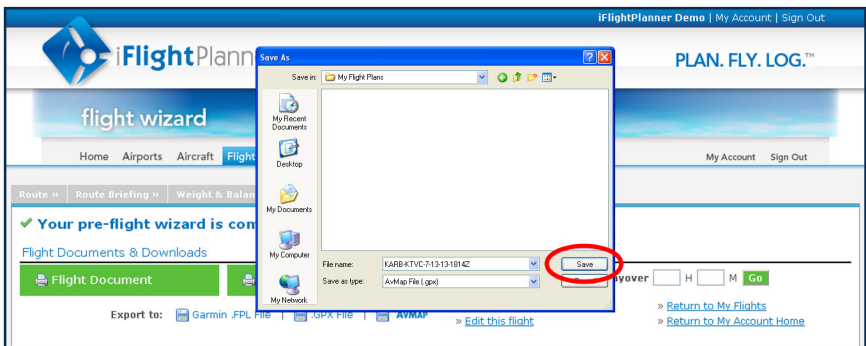
2b. Complete the Flight Wizard™ and click the “Export to AvMap” link beneath the green, “Passenger Info” document (as shown).



The screenshot shows the iFlightPlanner Flight Wizard interface. At the top, there is a blue banner with the iFlightPlanner logo and the text 'PLAN. FLY. LOG.™'. Below the banner, there is a navigation bar with links for Home, Airports, Aircraft, Flights, Weather, Weight & Balance, and Community. The 'Flights' link is highlighted. Below the navigation bar, there is a section titled 'Your pre-flight wizard is complete!'. Under this section, there are two tabs: 'Flight Documents & Downloads' and 'Other Tasks'. The 'Flight Documents & Downloads' tab is active, showing a list of documents: 'Flight Document' and 'Passenger Info'. The 'Passenger Info' document is highlighted. Below the documents, there is a section titled 'Export to:' with links for 'Garmin .FPL File', '.GPX File', and 'AvMap'. The 'AvMap' link is highlighted with a red circle. To the right of the 'AvMap' link, there are links for 'Plan another flight' and 'Edit this flight'. Below these links, there are links for 'Return to My Flights' and 'Return to My Account Home'.

3. The “Save As” option will appear after clicking the “Export to AvMap” link allowing you to save the flight route to your computer's hard drive.

4. Once satisfied with the file (it is named according to your departure, destination, date and time by default) and where it is to be saved, click “Save” (as shown).



5. Connect your AvMap EKP V to your computer and open the AvMap Suite if the program does not automatically start when the device is connected.

6. Click “Explore Device” from the options menu (as shown).

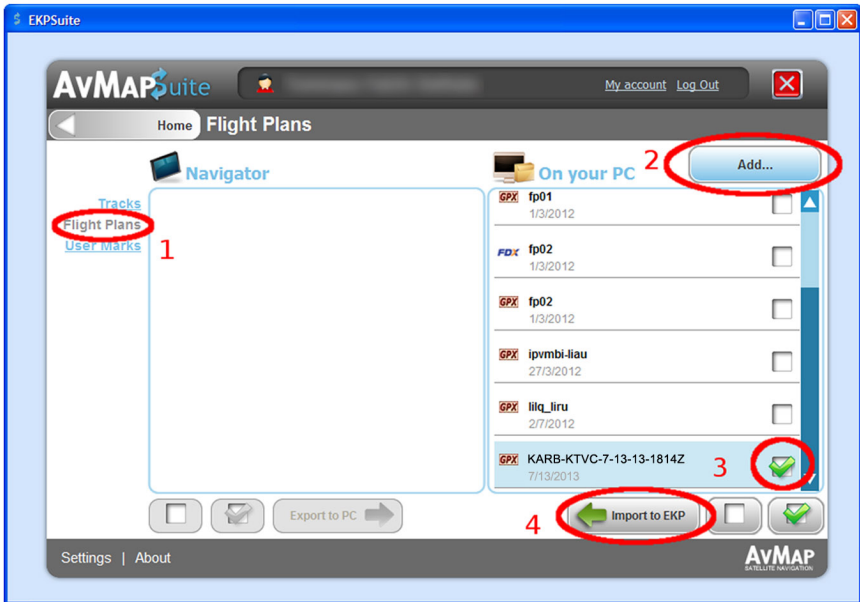


7-1. Click “Flight Plans” from the list on the left.

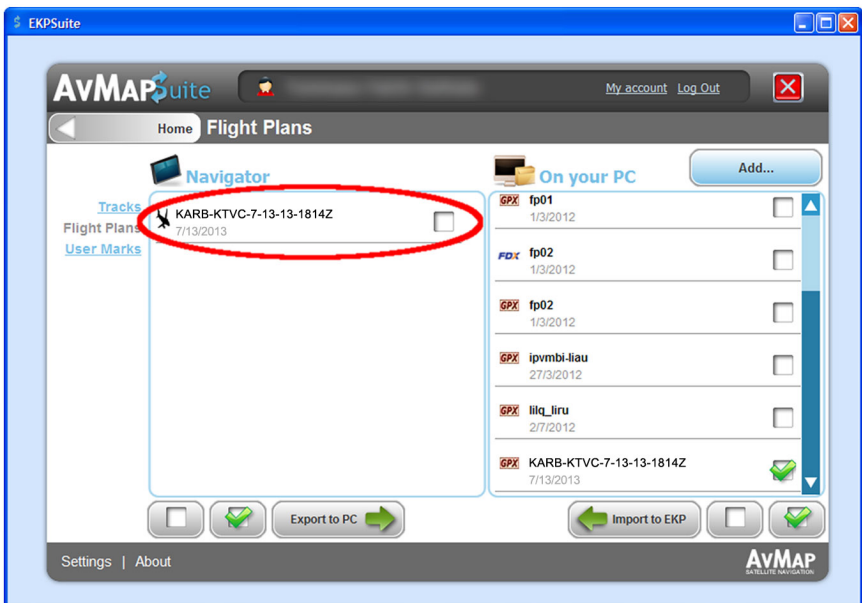
7-2. Click “Add” and select the flight plan file that was exported by iFlightPlanner.

7-3. Place a check-mark next to the iFlightPlanner flight plan files(s) that you wish to import to your AvMap GPS navigator.

7-4. Click “Import to EKP” (as shown on the next page).



8. Flight plan(s) will be listed once they are saved to the "Navigator" (as shown).



9. Disconnect your AvMap EKP V from your computer, wait for the device to load and then select your desired flight plan from the "Flight Plan" page.

10. Remember to close and log your flight using <http://www.iFlightPlanner.com/My>.